



XEVL-2011-GPRS.1

| English | Technical data |
|--|--|
| 01 Power | 2.5 kW 8530 BTU/h |
| 02 Frequency | 50 / 60 Hz |
| 03 Electric nominal heat input | 0 kW 0 BTU/h |
| 03 Gas nominal heat input | 48 kW 163776 BTU/h |
| 06 Power supply cable type | H07RN-F |
| 07 Voltage Power cable section Circuit breaker | 220-240V ~1PH+N+PE 3G x 1,5 mm ² 16 A I1 11 A In 11 A |
| 08 Cable Plug | Schuko |
| 11 Water pressure | 150-600 kPa 22-87 psi |
| 12 Water max. consumption (steam) | 76 l/h @ 200 kPa 20 gal/h @ 29 psi |
| 13 Cavity dimensions (w x d x h) | 716 x 484 x 1470 mm 28-3/16" x 19-1/16" x 57-7/8" |
| 14 Max. food load | 90 kg 198 lbs |
| 15 Max. temperature | 300 °C 572 °F |
| 16 IP protection class | X5 |

| Italiano |
|---|
| 01 Potenza |
| 02 Frequenza |
| 03 Potenza termica nominale elettrica |
| 03 Potenza termica nominale gas |
| 06 Tipo cavo alimentazione |
| 07 Tensione Sezione cavi alimentazione Magnetotermico |
| 08 Cavo Spina |
| 11 Pressione acqua |
| 12 Consumo max acqua (vapore) |
| 13 Dimensioni camera cottura (l x p x h) |
| 14 Max. peso pieno carico |
| 15 Temperatura max. |
| 16 Grado protezione IP |

| Espanol |
|--|
| 01 Potencia |
| 02 Frecuencia |
| 03 Potencia térmica nominal eléctrica |
| 03 Potencia térmica nominal de gas |
| 06 Tipo de cable de alimentación |
| 07 Voltaje Sección del cable de alimentación Disyuntor |
| 08 Cable Enchufe |
| 11 Presión del agua |
| 12 Consumo máximo de agua (vapor) |
| 13 Dimensión de la cavidad (w x d x h) |
| 14 Carga máxima de alimentos |
| 15 Temperatura máxima |
| 16 Grado de protección IP |

| Français |
|--|
| 01 Puissance électrique |
| 02 Fréquence |
| 03 Puissance calorifique nominale électrique |
| 03 Puissance calorifique nominale du gaz |
| 06 Type de câble d'alimentation |
| 07 Tension Section câbles d'alimentation Disjoncteur |
| 08 Câble Prise |
| 11 Pression de l'eau |
| 12 Consommation max. d'eau (vapeur) |
| 13 Dimension de la cavité (l x p x h) |
| 14 Charge max. des aliments |
| 15 Température max. |
| 16 Niveau de protection IP |

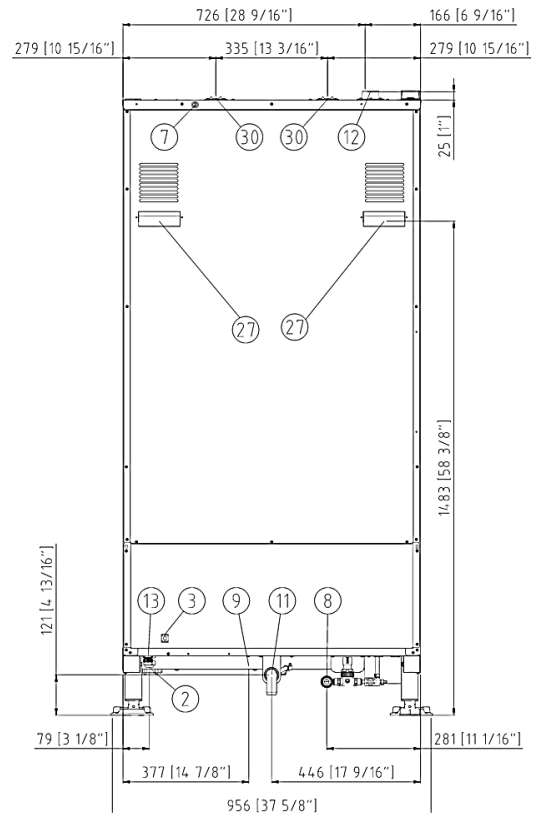
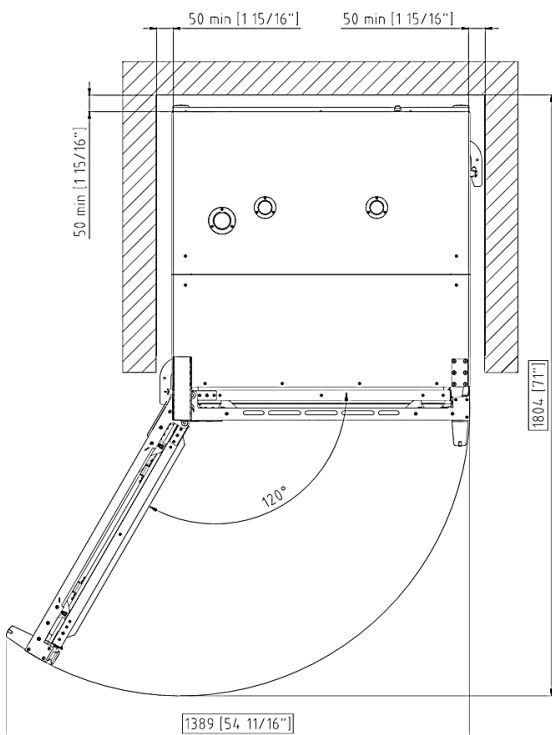
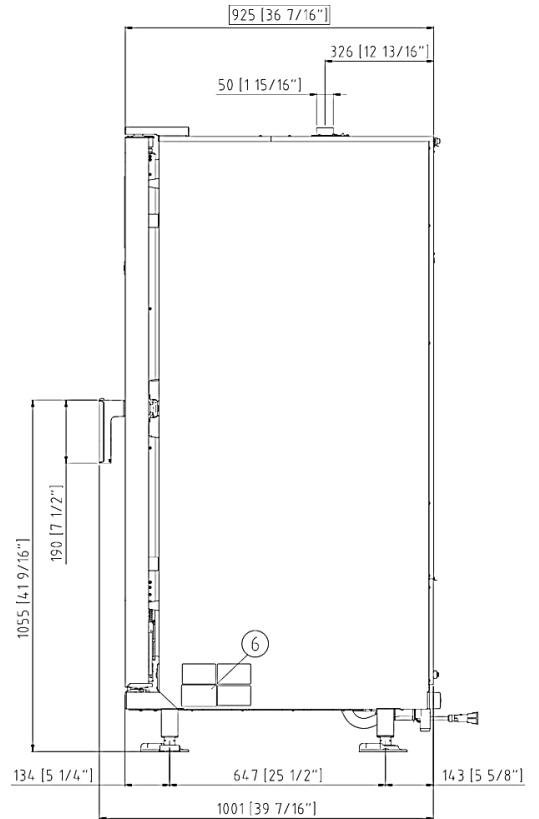
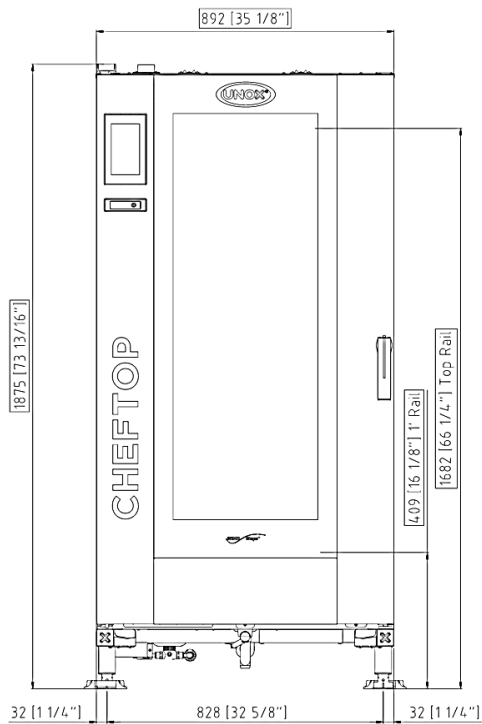
| Deutsch |
|---|
| 01 Elektrische Leistung |
| 02 Frequenz |
| 03 Elektrische Nennwärmeleistung |
| 03 Nennwärmeleistung Gas |
| 06 Stromkabel Typ |
| 07 Spannung Stromkabel Teil Sicherung |
| 08 Leitung Stecker |
| 11 Wasserdruck |
| 12 Maximaler Wasserverbrauch bei Dampfbetrieb |
| 13 Abmessungen des Hohlraums (B x T x H) |
| 14 Maximale Beladungskapazität |
| 15 Maximale Temperatur |
| 16 IP-Schutzart |

Terms and conditions of installations - Observe all local specific standard and regulations for installation and operations.

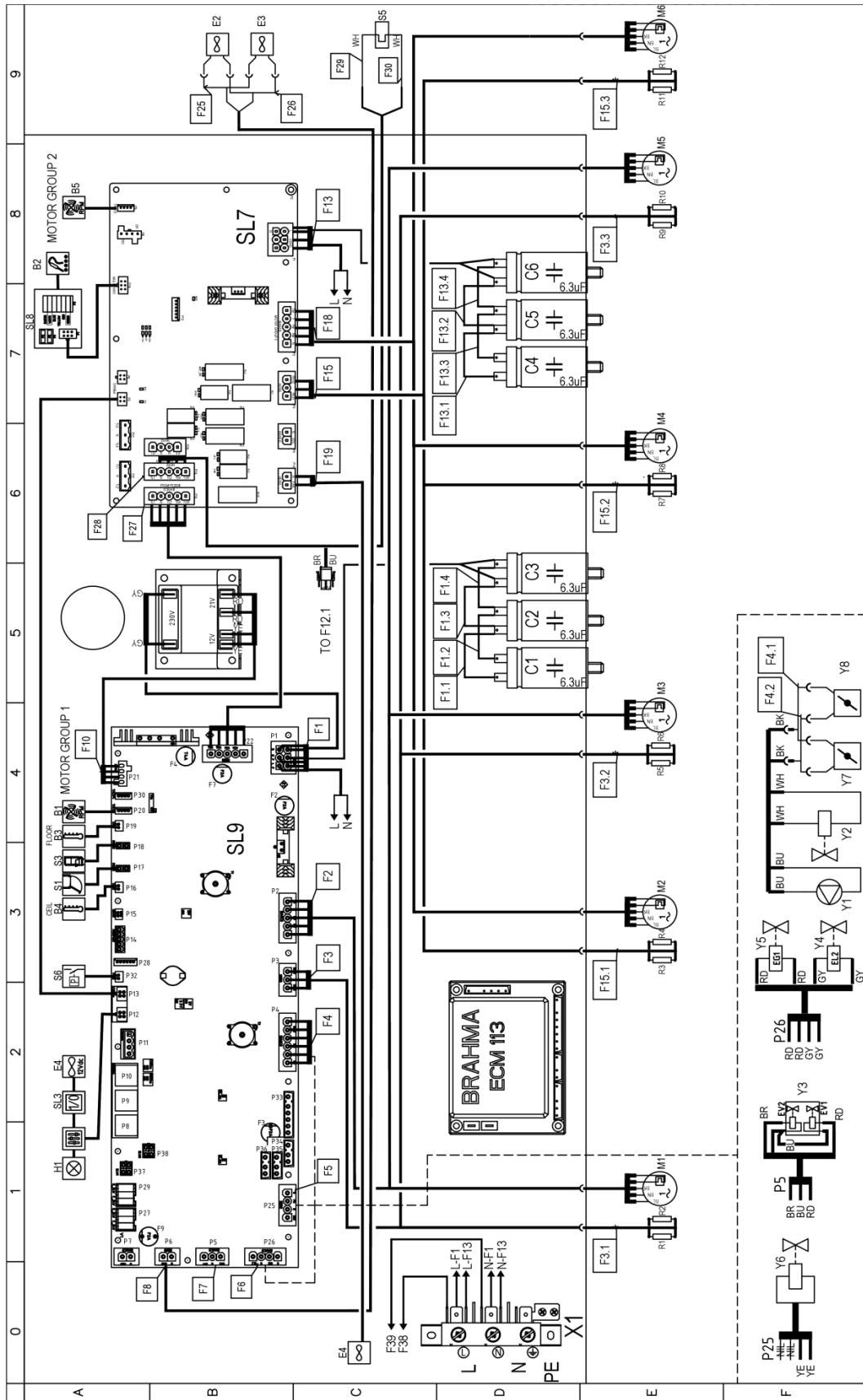


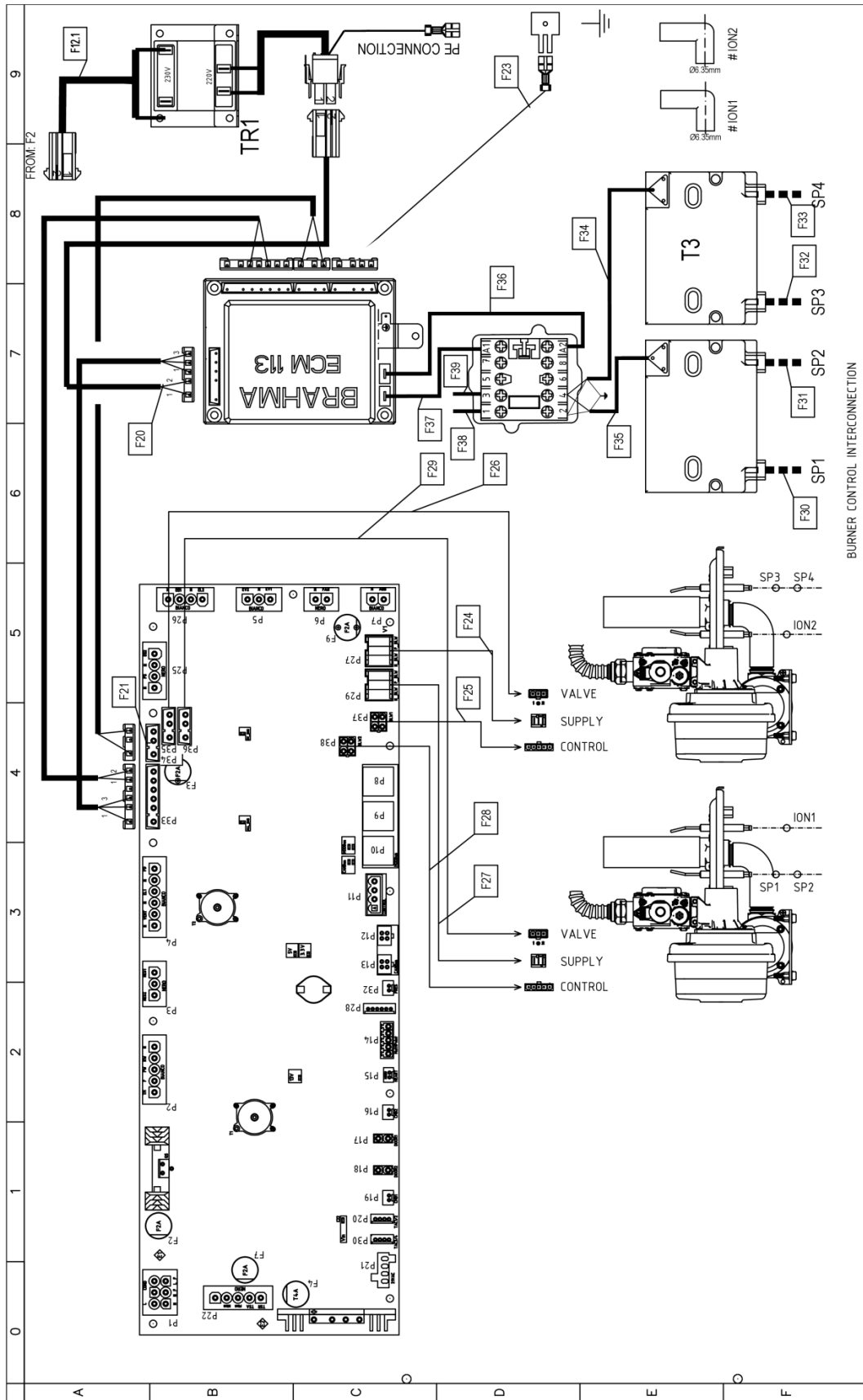
| Русский | 中文 |
|---|------------------------|
| 01 Мощность | 01 功率 |
| 02 Частота | 02 频率 |
| 03 Номинальная электрическая потребляемая мощность | 03 电额定热输入 |
| 03 Номинальная газовая потребляемая мощность | 03 燃气额定热输入 |
| 06 Тип силового кабеля | 06 电源电缆类型 |
| 07 Напряжение Сечение силового кабеля Токовый автомат | 07 电压 电源电缆截面 断路器 |
| 08 Кабель Вилка | 08 电缆和插头 |
| 11 Давление воды | 11 水压 |
| 12 Максимальное потребление воды (пар) | 12 最大水消耗 (蒸汽) |
| 13 Габариты камеры (ш x г x в) | 13 腔室尺寸 (宽 x 深 x 高) |
| 14 Максимальная загрузка | 14 最大食物负荷 |
| 15 Максимальная температура | 15 最高温度 |
| 16 Класс защиты IP | 16 IP保护等级 |

| Português |
|---|
| 01 Potência |
| 02 Frequência |
| 03 Potência térmica nominal elétrica |
| 03 Potência térmica nominal gas |
| 06 Tipo de cabo de alimentação |
| 07 Tensão Seção de cabos de alimentação Disjuntor |
| 08 Cabo Plugue |
| 11 Pressão da água |
| 12 Max. consumo de água (vapor) |
| 13 Dimensão de cavidade (c x l x a) |
| 14 Max. capacidade de alimento |
| 15 Max. temperatura |
| 16 Grau de proteção IP |



| | English | Italiano | Español | Français | Deutsch |
|----|---------------------------|-------------------------|------------------------|---------------------------|------------------------|
| 02 | Electrical connection | Allacciamento elettrico | Conexión eléctrica | Raccordement électrique | Elektrischer Anschluss |
| 08 | Water connection | Allacciamento idrico | Conexión de agua | Raccordement à l'eau | Wasseranschluss |
| 09 | Gas connection | Allacciamento gas | Conexión de gas | Raccordement au gaz | Gasanschluss |
| 11 | Water drain | Scarico acqua | Desagüe del agua | Evacuation | Abflussrohr |
| 12 | Smoke exhaust | Scarico fumi | Salida de humos | Aspiration des fumées | Abluftrohr |
| 13 | Accessories connection | Collegamento accessori | Conexión de accesorios | Connexion des accessoires | Anschluss des Zubehörs |
| 30 | Combustion fumes | Fumi di combustione | Gases de combustión | Fumées de combustion | Abgasse |
| 31 | Air inlet | Ingresso aria | Entrada de aire | Entrée d'air | Lufteinlass |
| | Русский | 中文 | Português | | |
| 02 | Электрическое подключение | 电源连接 | Conexão elétrica | | |
| 08 | Подключение к воде | 水连接 | Conexão hídrica | | |
| 09 | Подключение к газу | 燃气连接 | Conexão gás | | |
| 11 | Выход воды | 排水 | Saída de água | | |
| 12 | Выход газов | 排烟 | Saída de fumaça | | |
| 13 | Подключение аксессуаров | 配件连接 | Conexão de acessórios | | |
| 30 | Продукты горения | 燃烧烟雾 | Fumaça de combustão | | |
| 31 | Воздухозаборник | 空气入口 | Entrada de ar | | |





| | 0 | 1 | 2 | 3 | 4 | 5 | 6 | 7 | 8 | 9 |
|---|---|---|---|--|---|---|---|---|---|---|
| A | | | | | | | | | | |
| B | Sigle BC1 C1,C2,C3,C4,C5,C6 K1 SL7 SL8 SL9 T1 T2,T3 X1 B1,B5 B2 B3,B4 E2,E3 E4 H1 R1,R2,R3,R4,R5,R6 S1 S2 TR1 Y1 Y2,Y4,Y5,Y6 Y3 Y7,Y8 E4 S3 S5 S6 SL3 | ITALIANO CONTROLLO FIAMMA CONDENSATORE TELERUTTORE SCHEDA POTENZA SCHEDA GIUNZIONE SONDA CUORE SCHEDA POTENZA TRASFORMATORE TRASFORMATORE D'ACCENSIONE MORSETTIERA SENSORE VELOCITA' MOTORE SONDA AL CUORE SONDA CAMERA VENTOLA RAFFREDDAMENTO 230V VENTOLA RAFFREDDAMENTO 12V LUCE CAMERA RESISTENZA DI MODULAZIONE VENTILATORE MICRO INTERRUITTORE PORTA SCHEDA CONTROLLO TRASFORMATORE POMPA ELETTROVALVOLA ACQUA ELETTROVALVOLA ACQUA 3 STADI DRY MAXY VENTOLA RAFFREDDAMENTO 230V MOTORE MICRO INTERRUITTORE CARRELLO TERMOSTATO SICUREZZA PRESSOSTATO SCHEDA 110 - USB | ENGLISH FLAME CONTROL DEVICE MOTOR CAPACITOR CONTACTOR POWER CARD HEART PROBE JUNCTION BOARD POWER CARD TRANSFORMER IGNITION TRANSFORMER TERMINAL BLOCK MOTOR SPEED SENSOR CORE PROBE TEMPERATURE PROBE COOLING FAN 230V COOLING FAN 12V OVEN LIGHT MOTOR MODULATION RESISTANCE DOOR MICROSWITCH CONTROL BOARD TRANSFORMER PUMP WATER SOLENOID VALVE WATER SOLENOID VALVE 3STAGE DRY MAXY COOLING FAN 230V MOTOR TROLLEY MICROSWITCH SAFETY THERMOSTAT PRESSURE SWITCH USB - 110 BOARD | FRANCAIS FLAMME RELEVATRICE CONDENSATEUR TELERUPTEUR CARTE DE PUISSANCE CARTE DE JONCTION DE SOND DE COEUR CARTE DE PUISSANCE TRANSFORMATEUR TRANSFORMATEUR D'ALLUMAGE BORNIER CAPTEUR DE VITESSE MOTEUR SOND A COEUR SOND DE CHAMBRE TURBINE DE REFROIDISSEMENT 230V TURBINE DE REFROIDISSEMENT 12V ECLAIRAGE DE CHAMBRE RESISTANCE DE MODULATION VENTILATEUR MICROINTERRUPTEUR DE PORTE CARTE DE CONTROLE TRANSFORMATEUR POMPE ELECTROVANNE EAU ELECTROVANNE EAU 3 ETAPES DRY MAXY TURBINE DE REFROIDISSEMENT 230V MOTEUR INTERRUPTEUR PANIER THERMOSTAT DE SECURITE PRESSOSTAT USB - CARTE 110 | ESPAÑOL CONTROL LLAMA CONDENSADOR TELERRUPTOR TARJETA POTENCIA JUNTA DE LA UNION DE LA SONDA DEL CORAZON TARJETA POTENCIA TRANSFORMADOR TRANSFORMADOR D'INGICION CONECTOR SENSOR DE VELOCIDAD MOTOR SONDA CORAZON SONDA CAMARA TURBINA DE REFRIGERACION 230V TURBINA DE REFRIGERACION 12V LUZ CAMARA RESISTENCIA MODULACION VELOCIDAD MICROINTERRUPTOR PUERTA TARJETA DE CONTROL TRANSFORMADOR BOMBA ELECTROVALVULA ELECTROVALVULA 3 ETAPAS DRY MAXY TURBINA DE REFRIGERACION 230V MOTOR MICROINTERRUPTOR CARRO TERMOSTATO DE SEGURIDAD PRESOSTATO USB - TARJETA 110 | DEUTSCH FLAMMESTEUERUNG KONDENSATOR RELAIS POWERPLATINE HERZTEST-ANSCHLUSSPLATTE POWERPLATINE TRANSFORMATOR ZUNDTRANSFORMATOR KLEMMLEISTE GESCHWINDIGKEITSENSOR KERNTEMPERATURFUHLER GARRAUMTEMPERATURFUHLER LUFTER 230V LUFTER 12V BELEUCHTUNG WIDERSTAND LOW FAN TURKONTAKTSCHALTER KONTROLL PLATINE TRANSFORMATORE PUMPE ELEKTROVENTIL ELEKTROVENTIL 3 STUFEN DRY MAXY LUFTER 230V MOTOR TROLLEY MICROSWITCH SICHERHEITS THERMOSTAT DRUCKSCHALTER USB - 110 PLATINE | | | | |
| C | | | | | | | | | | |
| D | | | | | | | | | | |
| E | | | | | | | | | | |
| F | | | | | | | | | | |