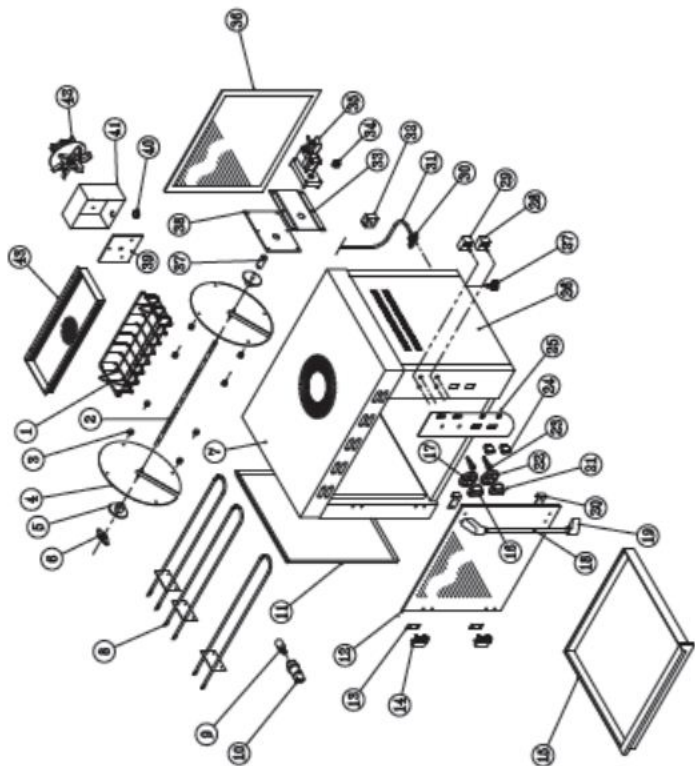


**EXPLODED DIAGRAM  
8 BIRD CHICKEN ROTISSERIE  
MODEL:CGA0008 R05**



**MODEL: 8 BIRD CHICKEN GRILLER**  
**MODEL CODE : CGA0008 R05**

<b>Part No.</b>	<b>Description</b>
1	CHICKEN GRILLER BASKET
2	CHICKEN GRILLER SHAFT
3	CHICKEN GRILLER BASKET PIN
4	CHICKEN GRILLER CAROUSEL END PLATES
5	CHICKEN GRILLER FLANGE
6	CHICKEN GRILLER BEARING
7	TOP COVER ASSEMBLY
8	1000W ELEMENT
9	CHICKEN GRILLER LIGHT BULB
10	CHICKEN GRILLER LIGHT HOLDER
11	LEFT SIDE COVER PANEL
12	CHICKEN GRILLER FRONT GLASS DOOR
13	HINGE STIFFENER PLATE
14	DOOR HINGES
15	FAT TRAY ASSEMBLY
16	KNOB
17	BEZEL
18	DOOR HANDLE TUBE
19	DOOR HANDLE NODE
20	MAGNET BRACKET
21	KNOB
22	BEZEL
23	PILOT LIGHT
24	NON-ILLUMINATED ROCKER SWITCH
25	CHICKEN GRILLER FACIA
26	RIGHT SIDE COVER PANEL
27	ADJUSTABLE FOOT
28	2 HOUR TIMER
29	THERMOSTAT
30	CABLE GRIP
31	POWER CORD
32	CERAMIC BLOCK
33	MOTOR MOUNT PLATE
34	POLYAMIDE CONNECTOR BLOCK
35	CHICKEN GRILLER GEARED MOTOR
36	CHICKEN GRILLER REAR GLASS
37	MOTOR COUPLING
38	MOTOR INSULATION PAD
39	FAN MILL BOARD
40	20mm RUBBER GROMMET
41	FAN BOX
42	CHICKEN GRILLER FAN MOTOR
43	FAN COVER